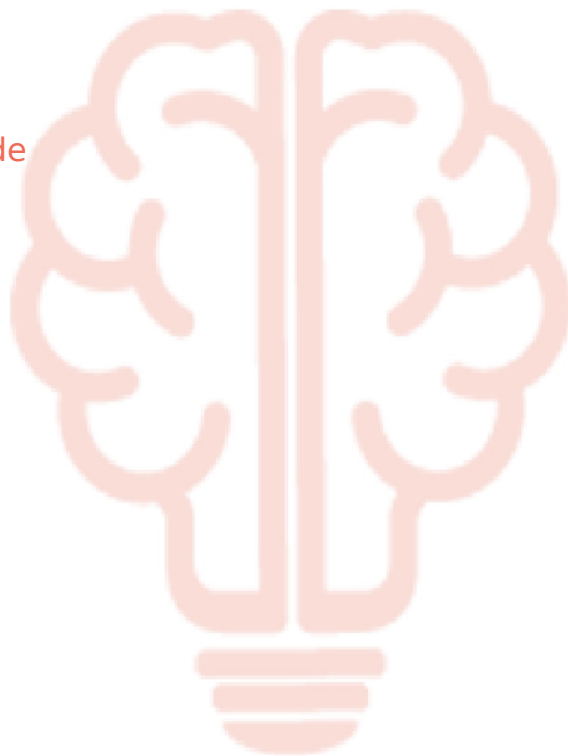


Student Life Story AI

The **Student Life Story AI** plugin provides comprehensive academic insights to help teachers and administrators track student performance across the entire Moodle site using AI analysis.

Contents

- [Overview](#)
- [Prerequisites](#)
- [Installation](#)
- [Administrator guide](#)
 - [Overview](#)
 - [Reports](#)
- [Permissions](#)



Overview

The **Student Life Story AI** plugin consolidates, in a single view, the entire academic trajectory of each student within Moodle. It analyzes their grades, participation, and progress across all enrolled courses, providing a comprehensive overview of their learning journey.

Using artificial intelligence, the plugin automatically generates a narrative report that interprets the student's performance over time and suggests personalized improvement actions.

This AI-driven approach allows educators, tutors, and academic coordinators to understand not only what a student's results are, but also why those results occur and how to enhance their learning outcomes.

The system combines quantitative data (grades, percentages, progress) with qualitative interpretation generated by AI, transforming raw data into actionable academic insights.

Key Features

Consolidated Academic View

The plugin provides a unified interface that eliminates the need to manually navigate through individual courses. Instead, teachers and academic coordinators can access all relevant student data from a single location, including:

- **Course Enrollment Data:** A complete list of all courses the student is enrolled in
- **Grades:** Academic performance across all enrolled courses
- **Progress Indicators:** Visual indicators of course completion and progress rates
- **Participation Metrics:** Data about student engagement and activity within courses

AI-Powered Analysis

The core feature of the Student Life Story AI plugin is its artificial intelligence engine that:

- Collects relevant academic information such as grades, course completion rates, and participation metrics
- Sends this data securely to the DataCurso AI Provider for processing
- Produces an interpretive narrative report that describes the student's academic evolution
- Highlights strengths and weaknesses in the student's performance
- Provides concrete recommendations for improvement

Export Capabilities

Administrators and teachers can generate downloadable CSV files containing all the student's consolidated data for offline analysis or institutional reporting.

Target Users

The Student Life Story AI plugin is designed for:

- **Teachers:** To monitor individual student performance and provide personalized feedback
- **Tutors:** To track student progress and identify areas needing intervention
- **Academic Coordinators:** To gain a comprehensive view of student trajectories across multiple courses
- **Administrators:** To export data and generate institutional reports

Benefits

1. **Time Efficiency:** Consolidates data from multiple courses into a single view, saving time on manual data gathering

2. **Data-Driven Decisions:** Transforms raw quantitative data into qualitative insights
3. **Personalized Learning:** Provides actionable recommendations tailored to each student's performance
4. **Historical Analysis:** Enables tracking of student evolution over time
5. **Institutional Reporting:** Facilitates data export for compliance and reporting purposes

Integration with DataCurso AI Provider

This plugin requires the **DataCurso AI Provider** to function. The AI provider must be installed separately in Moodle and configured with a valid license key. Once configured, the plugin leverages the AI capabilities to generate narrative feedback and recommendations for each student.

Download

The Student Life Story AI plugin can be downloaded from the official Moodle Plugins directory:

[Download Student Life Story AI](#)

Pre-requisites

To use the **Student Life Story AI** plugin, ensure your environment meets the following requirements:

1. **Moodle 4.5** or higher.
2. **DataCurso AI Provider** plugin installed. You can download it for free from the [Moodle Plugins Directory](#).
3. A valid **license key** configured in the DataCurso AI Provider settings.

[!IMPORTANT] This plugin will not function unless the **DataCurso AI Provider** plugin is installed and properly licensed.



Installation

Installation via uploaded ZIP file

1. Log in to your Moodle site as an administrator and go to [Site Administration > Plugins > Install Plugins](#).
2. Upload the ZIP file with the plugin code.
3. Check the plugin validation report and complete the installation.

Manual installation

The plugin can also be installed by placing the contents of this directory in:

```
{your/moodle/dirroot}/report/lifestory
```

Next, log in to your Moodle site as an administrator and go to [Site Administration > General > Notifications](#) to complete the installation.

Alternatively, you can run:

```
php admin/cli/upgrade.php
```

to complete the installation from the command line.

Administrator Guide

Welcome to the **Administrator Guide** for Student Life Story AI. This tool provides comprehensive academic insights to help you track student performance across the entire Moodle site.

Contents

- [Reports](#)

Explore the following sections to learn more about each feature.



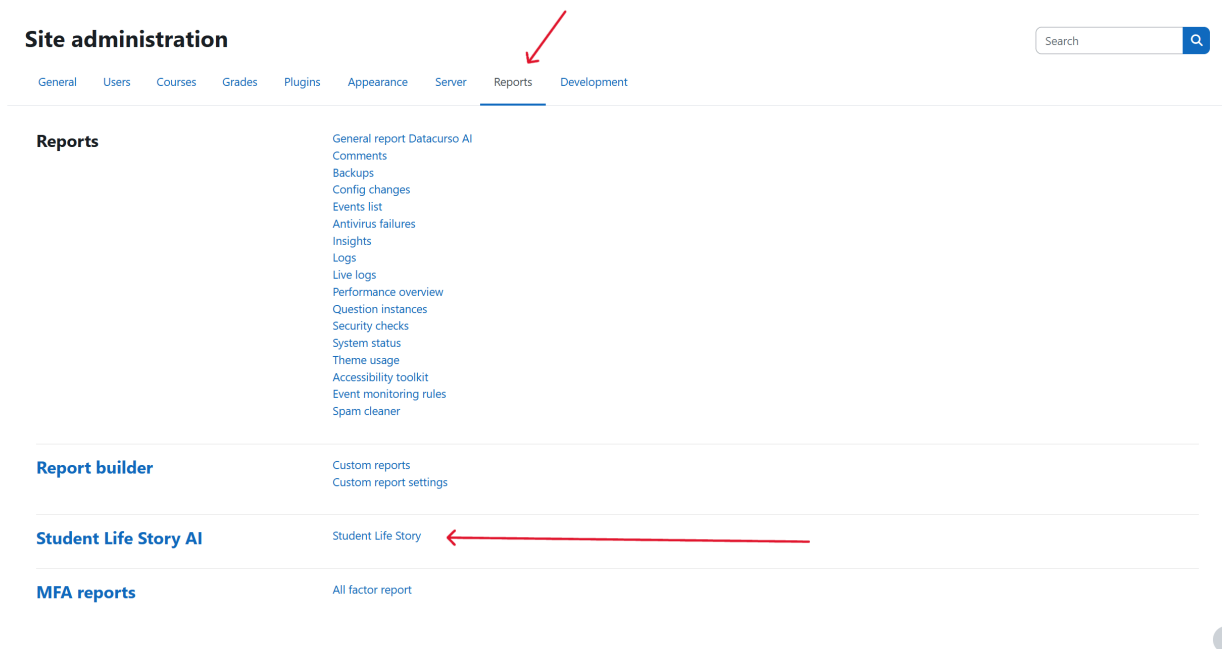
Student Life Story AI

Access the Plugin

Once installed, access the plugin by navigating to:

Site Administration > Reports > Student Life Story AI

From this section, you can search for students, review their complete learning history, generate AI-based feedback, and export structured data for further analysis.



The screenshot shows the Moodle Site Administration interface. At the top, there is a search bar and a navigation menu with the following items: General, Users, Courses, Grades, Plugins, Appearance, Server, Reports, and Development. A red arrow points to the 'Reports' menu item. Below the navigation menu, there is a list of reports under the heading 'Reports'. The list includes: General report Datacurso AI, Comments, Backups, Config changes, Events list, Antivirus failures, Insights, Logs, Live logs, Performance overview, Question instances, Security checks, System status, Theme usage, Accessibility toolkit, Event monitoring rules, and Spam cleaner. Below this list, there are three sections: 'Report builder' with sub-items 'Custom reports' and 'Custom report settings'; 'Student Life Story AI' with the sub-item 'Student Life Story'; and 'MFA reports' with the sub-item 'All factor report'. A red arrow points to the 'Student Life Story' link. In the bottom right corner, there is a small circular icon with a question mark.

Search student

Use the search field to locate a specific student by name or email address. The plugin will instantly display all the courses the student is enrolled in, along with academic data such as grades, progress, and completion rates.

Student Life Story

Please select a user to view their life story



This consolidated view eliminates the need to manually navigate through individual courses and provides a single access point for understanding each student's academic evolution.

Plugin View

The main interface of the plugin provides a structured summary of each student's academic record, including:

- A list of all enrolled courses and corresponding progress indicators.
- A **Generate AI Feedback** button that sends the student's academic data to the AI system for analysis.
- A **CSV Export** button that allows users to download all relevant information for offline or institutional reporting.

Student life story

Piero Llanos Sánchez Clean Generate feedback with AI Export to CSV

DataCurso

AI in everything

Rating item	Calculated weighting	Qualification	Range	Percentage	Feedback	Contributes to the total course
AI in everything						
100 Critical essay on the importance of artificial intelligence in education	100.00%	1.00	0-20	5.00%	Piero, I'd like to begin by saying that writing a critical essay is a valuable and challenging exercise. It's clear you haven't submitted your submission, which makes your assessment difficult this time. I would recommend reviewing the requirements and making sure you organize your ideas before writing. It's important to structure your essay well with a clear introduction, develop your arguments logically, and conclude effectively. Additionally, incorporating scholarly sources is essential to support your claims. I look forward to seeing you present your work in the future, as I want to help you develop your skills in this subject.	5.00%
TOTAL CALCULATION Course total	-	1.00	0-20	5.00%		-

BASIC MATHEMATICS

Rating item	Calculated weighting	Qualification	Range	Percentage	Feedback	Contributes to the total course
BASIC MATHEMATICS						

Web development

Rating item	Calculated weighting	Qualification	Range	Percentage	Feedback	Contributes to the total course
Web development						

?

Through this view, teachers and coordinators can monitor student performance, compare historical trends, and identify strengths or areas for improvement.

Button Generate AI Feedback

The **“Generate AI Feedback”** button activates the artificial intelligence engine to analyze the student’s performance data and produce an interpretive narrative report.

1. When pressed, the system collects relevant academic information — such as grades, course completion rates, and participation metrics — and sends it securely to the DataCurso AI Provider for processing.

Student life story

Piero Llanos Sánchez Clean

[Generate feedback with AI](#)

[Export to CSV](#)

DataCurso

AI in everything

Rating Item	Calculated weighting	Qualification	Range	Percentage	Feedback	Contributes to the total course
AI in everything						
TASK Critical essay on the importance of artificial intelligence in education	100.00%	1.00	0-20	5.00%	Piero, I'd like to begin by saying that writing a critical essay is a valuable and challenging exercise. It's clear you haven't submitted your submission, which makes your assessment difficult this time. I would recommend reviewing the requirements and making sure you organize your ideas before writing. It's important to structure your essay well with a clear introduction, develop your arguments logically, and conclude effectively. Additionally, incorporating scholarly sources is essential to support your claims. I look forward to seeing you present your work in the future, as I want to help you develop your skills in this subject.	5.00%
TOTAL CALCULATION Course total	-	1.00	0-20	5.00%		-

BASIC MATHEMATICS

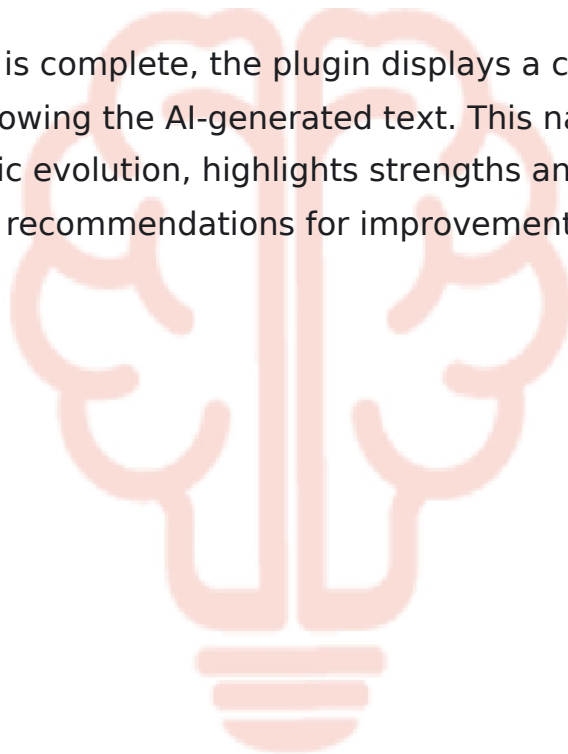
Rating Item	Calculated weighting	Qualification	Range	Percentage	Feedback	Contributes to the total course
BASIC MATHEMATICS						

Web development

Rating Item	Calculated weighting	Qualification	Range	Percentage	Feedback	Contributes to the total course
Web development						

?

- Once the analysis is complete, the plugin displays a clear, structured feedback view, showing the AI-generated text. This narrative describes the student's academic evolution, highlights strengths and weaknesses, and provides concrete recommendations for improvement.



Student Life Story

Estudiante 1

Clear

Generate AI Feedback

Export to CSV

DataCurso

AI Feedback

1. Initial Stage: General Overview

Student 1 has shown variable performance in his courses. His highest grade was 17.0 in "Basic Mathematics II," specifically in Unit 4, Week 8, indicating notable potential. However, poor performance was also observed in the "test course," where he received a grade of 0.0. A more detailed analysis by subject area and an evaluation of his progress throughout these areas will follow.

2. Intermediate Stage: Analysis by Areas or Categories

Basic Mathematics II

- **Unit 1 :**
 - Week 1: 15.0 (75.0%) - Feedback: Very good
 - Week 2: 12.0 (60.0%) - Feedback: Good
 - **Total :** 13.5 (67.5%)
- **Unit 2 :**
 - Week 3: 15.0 (75.0%) - Feedback: Very good
 - Week 4: 16.0 (80.0%) - Feedback: Very good
 - **Total :** 15.5 (77.5%)
- **Unit 3 :**
 - Week 5: 12.0 (60.0%) - Feedback: Good
 - Week 6: 17.0 (85.0%) - Feedback: Excellent
 - **Total :** 14.5 (72.5%)
- **Unit 4 :**
 - Week 7: 16.0 (80.0%) - Feedback: Very good
 - Week 8: 18.0 (90.0%) - Feedback: Excellent
 - **Total :** 17.0 (85.0%)
- **Course Average :** 15.125 (75.63%)

test course

- **Total :** 0.0 (0.0%)

AI in everything

• **Task :** Critical essay on the importance of artificial intelligence in education: 14.0 (70.0%) - Feedback: Great work, some points to correct.

General Analysis : The student performed outstandingly in "Basic Mathematics II," achieving grades of 75% or higher in most units. In contrast, in the "Test Course," his performance was unsatisfactory, which urgently needs to be addressed. In the "AI in Everything" course, the student demonstrated an understanding of the subject matter, but with room for improvement.

3. Advanced Stage: Temporal Evolution

Since the data do not provide a clear timeline for each unit and assignment, it is difficult to determine the student's quantitative progress over time. However, a favorable trend is observed in "Basic Math II," where grades in the later weeks (Units 3 and 4) are higher than the initial ones (Units 1 and 2). This indicates positive progress, suggesting that the student has improved his mathematical understanding and skills as the units progress.

4. Final Stage: Student Profile

Strengths : - Outstanding ability in mathematics, with solid performance in the final units. - Good analytical and written skills in "AI in everything."

Weaknesses : - Poor performance in the "test course," where the student received no grade. - Needs to improve attention to detail, as indicated by the feedback on the AI essay.

Conclusion : The student demonstrates strong math proficiency, which is encouraging. However, addressing his poor performance on the "test course" is crucial to ensure balanced development in all areas.

5. Feedback Stage and Improvement Plan

Personalized Suggestions : 1. **Test Course Reinforcement :** It is recommended to develop a specific review plan for the "test course" material. Consider tutoring sessions or study groups.

2. **Feedback Attention :** Work on the points mentioned in the critical essay feedback to improve the quality of written submissions in future projects.
3. **Using Resources :** Take advantage of additional resources available, such as video tutorials or discussion forums in Moodle, to clarify doubts in real time.
4. **Self-Assessment and Reflection :** Implement a habit of self-assessment after each task, reflecting on areas for improvement.
5. **Goal Setting :** Define clear and achievable goals for each course, monitoring progress and making adjustments as needed.

By actively focusing on these areas of improvement, students have the potential to achieve exceptional performance in all their subjects.

Button CSV

The CSV export button allows administrators and teachers to generate a downloadable file containing all the student's consolidated data.

Student life story

Piero Llanos Sánchez Clean

[Generate feedback with AI](#)

[Export to CSV](#)



DataCurso

AI in everything

Rating item	Calculated weighting	Qualification	Range	Percentage	Feedback	Contributes to the total course
AI in everything						
100 Critical essay on the importance of artificial intelligence in education	100.00%	1.00	0-20	5.00%	Piero, I'd like to begin by saying that writing a critical essay is a valuable and challenging exercise. It's clear you haven't submitted your submission, which makes your assessment difficult this time. I would recommend reviewing the requirements and making sure you organize your ideas before writing. It's important to structure your essay well with a clear introduction, develop your arguments logically, and conclude effectively. Additionally, incorporating scholarly sources is essential to support your claims. I look forward to seeing you present your work in the future, as I want to help you develop your skills in this subject.	5.00%
TOTAL CALCULATION Course total	-	1.00	0-20	5.00%		-

BASIC MATHEMATICS

Rating item	Calculated weighting	Qualification	Range	Percentage	Feedback	Contributes to the total course
BASIC MATHEMATICS						

Web development

Rating item	Calculated weighting	Qualification	Range	Percentage	Feedback	Contributes to the total course
Web development						



Changelog

Centralized record of all changes made to the project across versions. This section provides a chronological overview of new features, improvements, bug fixes, and breaking changes introduced in each release.

Use this page to track the evolution of the project, understand what has changed between versions, and identify updates that may require configuration changes or code adjustments.

Each entry includes the version number, release date, and a summary of the modifications introduced in that version.



Version 1.0.4

Release date: 2026-04-21T22:28:19Z

Summary

This version includes improvements and updates focused on configuration flexibility, translation coverage, and clearer version history.

Changes

Added

- **PHPUnit regression test for report link visibility:** Added automated coverage to ensure the report link is visible to non-admin users who have the `report/lifestory:view` capability, helping prevent future access-control regressions.

Changed

- **Report placement and access checks:** Kept the plugin listed under **Site administration > Reports**, while switching to explicit capability checks to determine who can access it.

Fixed

- **Correct report link visibility for non-admin roles:** Removed the `$hassiteconfig` gate and now requires `report/lifestory:view`, ensuring eligible non-admin users can see and access the report as intended.

Notes

- If you manage multiple Moodle environments, verify the configured DataCurso service URL matches your deployment (standard vs EU-hosted).
- After updating, confirm the plugin version is correctly reflected in Moodle's plugin overview.

